



List Price Effective 10-01-08

**HARRISON**

Machine & Plastic Corporation

**SUPERDUCT®**

**Fume Exhaust Systems**

PVC Poly (Vinyl Chloride)

**Price List Effective Oct. 1, 2008**

**Manufacturing & Sales Office:  
11614 State Route 88, Garrettsville, OH 44231  
Phone (330) 527-5641 FAX (330) 527-5640**



**HARRISON**

HARRISON MACHINE AND PLASTIC CORPORATION

11614 State Route 88    Garrettsville, OH 44231

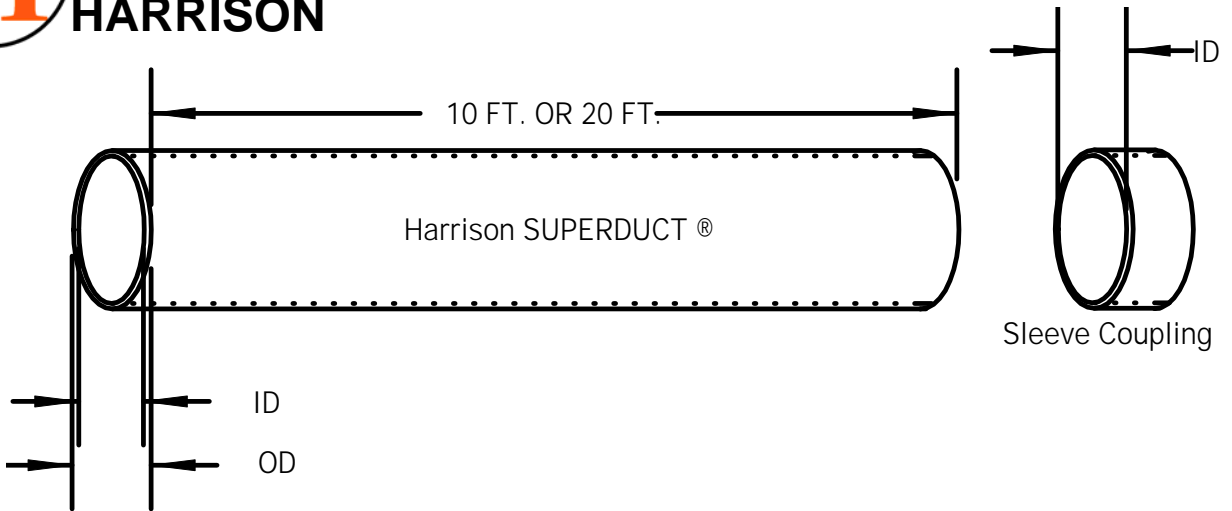
## Table of Contents

<b>Description</b>	<b>Page No.</b>
Table of Contents.....	2
Duct/pipe.....	3
Elbows 45° and 90°, Couplings.....	4
Reducer Couplings.....	5
Tee, True Wye, Rainskirt .....	6
Wye (45°).....	7
Flange (Belled and Blind), Caps.....	8
Butterfly Damper, Blastgate.....	9
Raincap (Style “A” and Style “B”).....	10
Flexible Hose Accessories.....	11
Exhaust and Lateral Hoods.....	12



**HARRISON**

**List Price Effective 10-01-08**

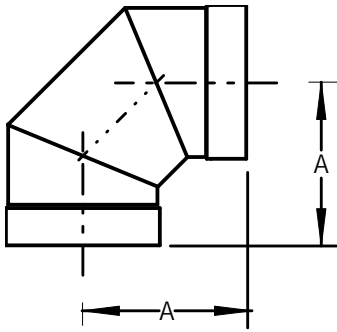


**Superduct**  
(Duct/Pipe)

Part No.	Size	(O.D)	Wall	Std. Length	Price per ft. 10 ft.	Price per ft. 20 ft.
<b>Extruded</b>						
1033-PP-02	2"	2.375"	0.091"	10 ft. or 20 ft.	\$3.06	\$2.91
1033-PP-03	3"	3.500"	0.135"	10 ft. or 20 ft.	\$4.82	\$4.58
1033-PP-04	4"	4.500"	0.173"	10 ft. or 20 ft.	\$6.87	\$6.53
1033-PP-05	5"	5.563"	0.214"	10 ft. or 20 ft.	\$11.67	\$11.09
1033-PP-06	6"	6.625"	0.187"	10 ft. or 20 ft.	\$11.91	\$11.31
1033-PP-07	7"	7.375"	0.187"	10 ft. or 20 ft.	\$19.16	\$18.20
1033-PP-08	8"	8.625"	0.187"	10 ft. or 20 ft.	\$17.21	\$16.35
1033-PP-09	9"	9.375"	0.187"	10 ft. or 20 ft.	\$24.49	\$23.27
1033-PP-10	10"	10.750"	0.187"	10 ft. or 20 ft.	\$21.83	\$20.74
1033-PP-11	11"	11.375"	0.187"	10 ft. or 20 ft.	\$28.52	\$27.09
1033-PP-12	12"	12.750"	0.187"	10 ft. or 20 ft.	\$25.44	\$24.17
1033-PP-14	14"	14.000"	0.187"	10 ft. or 20 ft.	\$31.83	\$30.24
1033-PP-16	16"	16.000"	0.187"	10 ft. or 20 ft.	\$36.86	\$35.02
1033-PP-18	18"	18.000"	0.187"	10 ft. or 20 ft.	\$50.38	\$47.86
1033-PP-20	20"	20.000"	0.219"	10 ft. or 20 ft.	\$60.78	\$57.74
1033-PP-24	24"	24.000"	0.250"	10 ft. or 20 ft.	\$83.33	\$79.16

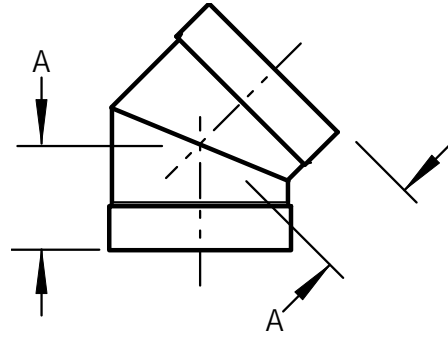
<b>Rolled</b>						
1033-PP-22	22"	22.000"	.187"	4 ft. w/ Coupling		
1033-PP-26	26"	26.000"	.187"	4 ft. w/ Coupling		
1033-PP-28	28"	28.000"	.187"	4 ft. w/ Coupling		
1033-PP-30	30"	30.000"	.187"	4 ft. w/ Coupling		

**Duct diameters thru 60" all available. Contact factory for details.**



**90° Elbow**  
 Belled (3 piece)

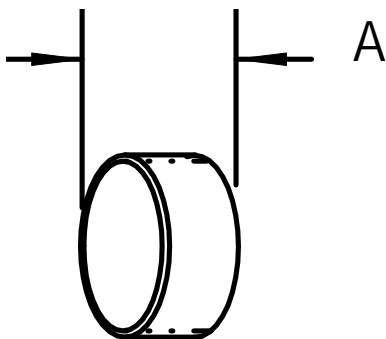
Part No.	Size	Price
1034-90-02	2"	\$78.66
1034-90-03	3"	\$94.39
1034-90-04	4"	\$100.96
1034-90-05	5"	\$119.01
1034-90-06	6"	\$127.22
1034-90-07	7"	\$144.73
1034-90-08	8"	\$145.00
1034-90-09	9"	\$175.92
1034-90-10	10"	\$170.99
1034-90-11	11"	\$190.14
1034-90-12	12"	\$198.32
1034-90-14	14"	\$235.56
1034-90-16	16"	\$298.21
1034-90-18	18"	\$422.97
1034-90-20	20"	\$631.99
1034-90-24	24"	\$757.84



**45° Elbow**  
 Belled (2 piece)

Part No.	Size	Price
1034-45-02	2"	\$60.47
1034-45-03	3"	\$65.67
1034-45-04	4"	\$75.92
1034-45-05	5"	\$80.98
1034-45-06	6"	\$89.13
1034-45-07	7"	\$104.23
1034-45-08	8"	\$112.17
1034-45-09	9"	\$124.48
1034-45-10	10"	\$120.38
1034-45-11	11"	\$145.28
1034-45-12	12"	\$149.11
1034-45-14	14"	\$169.10
1034-45-16	16"	\$214.77
1034-45-18	18"	\$325.57
1034-45-20	20"	\$407.64
1034-45-24	24"	\$543.08

**Coupling**  
 Sleeved



Part No.	Size	Price
1034-CP-02	2"	\$6.84
1034-CP-03	3"	\$12.31
1034-CP-04	4"	\$16.82
1034-CP-05	5"	\$22.30
1034-CP-06	6"	\$28.46
1034-CP-07	7"	\$36.93
1034-CP-08	8"	\$37.07
1034-CP-09	9"	\$42.68
1034-CP-10	10"	\$42.81
1034-CP-11	11"	\$46.51
1034-CP-12	12"	\$46.64
1034-CP-14	14"	\$66.34
1034-CP-16	16"	\$70.31
1034-CP-18	18"	\$87.43
1034-CP-20	20"	\$106.98
1034-CP-24	24"	\$124.48

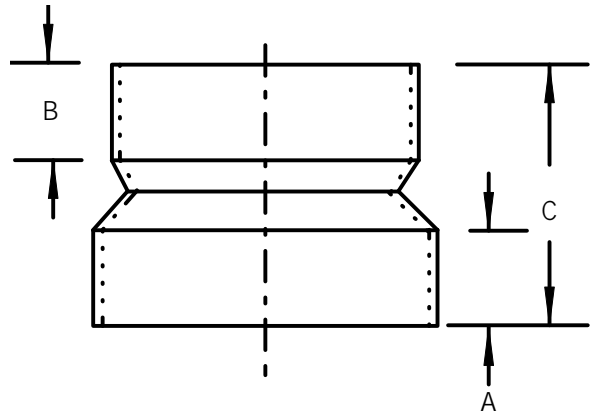


### Reducer Coupling

Bell X Bell

Part No.	Size	Price
1034-RC-0302	3 x 2"	\$56.30
1034-RC-0402	4 x 2"	\$65.36
1034-RC-0403	4 x 3"	\$47.03
1034-RC-0503	5 x 3"	\$71.43
1034-RC-0504	5 x 4"	\$64.17
1034-RC-0602	6 x 2"	\$133.36
1034-RC-0603	6 x 3"	\$131.35
1034-RC-0604	6 x 4"	\$49.79
1034-RC-0605	6 x 5"	\$77.61
1034-RC-0706	7 x 6"	\$75.05
1034-RC-0803	8 x 3"	\$217.68
1034-RC-0804	8 x 4"	\$134.80
1034-RC-0805	8 x 5"	\$144.73
1034-RC-0806	8 x 6"	\$58.82
1034-RC-0807	8 x 7"	\$85.27
1034-RC-0906	9 x 6"	\$93.84
1034-RC-0908	9 x 8"	\$90.07
1034-RC-1005	10 x 5"	\$298.25
1034-RC-1006	10 x 6"	\$161.09
1034-RC-1008	10 x 8"	\$76.39
1034-RC-1009	10 x 9"	\$106.97
1034-RC-1109	11 x 9"	\$93.84
1034-RC-1110	11 x 10"	\$92.35
1034-RC-1207	12 x 7"	\$227.50
1034-RC-1208	12 x 8"	\$191.16
1034-RC-1210	12 x 10"	\$86.04
1034-RC-1211	12 x 11"	\$118.21
1034-RC-1410	14 x 10"	\$233.53
1034-RC-1412	14 x 12"	\$121.74
1034-RC-1612	16 x 12"	\$269.51
1034-RC-1614	16 x 14"	\$148.83
1034-RC-1814	18 x 14"	\$372.66
1034-RC-1816	18 x 16"	\$203.86
1034-RC-2016	20 x 16"	\$486.82
1034-RC-2018	20 x 18"	\$267.32
1034-RC-2220	22 x 20"	\$285.68
1034-RC-2418	24 x 18"	\$630.87
1034-RC-2420	24 x 20"	\$514.34

*Rolled reducers also available*



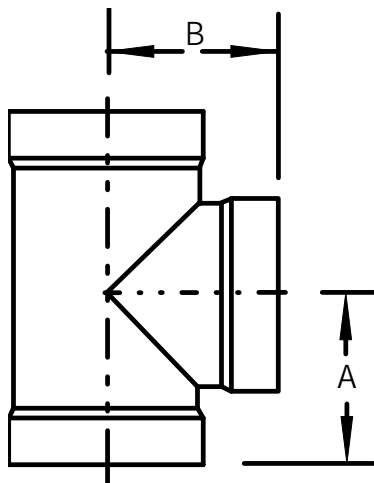
### Rolled Reducer Coupling

Bell X Bell

Part No.	Size	Price
1034-RCR-0604	6 X 4"	\$187.38
1034-RCR-0804	8 X 4"	\$222.32
1034-RCR-0806	8 X 6"	\$216.90
1034-RCR-1006	10 X 6"	\$255.04
1034-RCR-1008	10 X 8"	\$246.67
1034-RCR-1208	12 X 8"	\$289.59
1034-RCR-1210	12 X 10"	\$279.17
1034-RCR-1410	14 X 10"	\$315.72
1034-RCR-1412	14 X 12"	\$338.82
1034-RCR-1612	16 X 12"	\$351.37
1034-RCR-1614	16 X 14"	\$335.28
1034-RCR-1814	18 X 14"	\$416.79
1034-RCR-1816	18 X 16"	\$400.48
1034-RCR-2016	20 X 16"	\$451.56
1034-RCR-2018	20 X 18"	\$466.09
1034-RCR-2420	24 X 20"	\$554.70



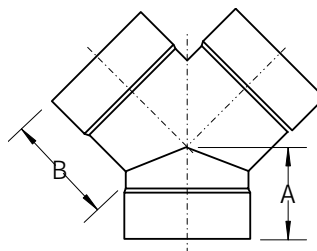
# HARRISON



**Tee**  
(Belled)

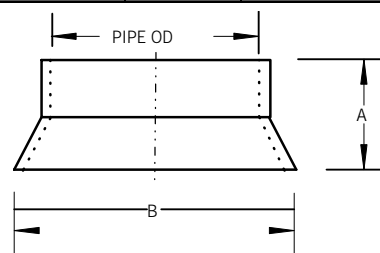
Part No.	Size	Price
1034-T-03	3 x 3 x 3"	\$105.09
1034-T-0302	3 x 3 x 2"	\$90.07
1034-T-04	4 x 4 x 4"	\$131.32
1034-T-0403	4 x 4 x 3"	\$108.10
1034-T-06	6 x 6 x 6"	\$159.37
1034-T-0604	6 x 6 x 4"	\$150.48
1034-T-07	7 x 7 x 7"	\$179.48
1034-T-08	8 x 8 x 8"	\$203.82
1034-T-0804	8 x 8 x 4"	\$183.71
1034-T-0806	8 x 8 x 6"	\$198.36
1034-T-09	9 x 9 x 9"	\$235.29
1034-T-10	10 x 10 x 10"	\$233.64
1034-T-1006	10 x 10 x 6"	\$213.12
1034-T-1008	10 x 10 x 8"	\$257.86
1034-T-11	11 x 11 x 11"	\$257.18
1034-T-12	12 x 12 x 12"	\$281.80
1034-T-1206	12 x 12 x 6"	\$279.06
1034-T-1208	12 x 12 x 8"	\$286.59
1034-T-1210	12 x 12 x 10"	\$339.52
1034-T-14	14 x 14 x 14"	\$325.57
1034-T-1410	14 x 14 x 10"	\$358.40
1034-T-1412	14 x 14 x 12"	\$415.86
1034-T-16	16 x 16 x 16"	\$421.32
1034-T-1612	16 x 16 x 12"	\$451.42
1034-T-1614	16 x 16 x 14"	\$478.78
1034-T-18	18 x 18 x 18"	\$656.61
1034-T-1814	18 x 18 x 14"	\$538.97
1034-T-1816	18 x 18 x 16"	\$560.86
1034-T-20	20 x 20 x 20"	\$809.82
1034-T-2016	20 x 20 x 16"	\$711.33
1034-T-2018	20 x 20 x 18"	\$809.82
1034-T-24	24 x 24 x 24"	\$1,061.52
1034-T-2418	24 x 24 x 18"	\$941.14
1034-T-2420	24 x 24 x 20"	\$1,001.33

# List Price Effective 10-01-08



**True Wye**  
(Belled)

Part No.	Size	Price
1034-TY-02	2"	\$184.64
1034-TY-03	3"	\$186.74
1034-TY-04	4"	\$189.44
1034-TY-05	5"	\$192.91
1034-TY-06	6"	\$206.08
1034-TY-07	7"	\$225.74
1034-TY-08	8"	\$250.88
1034-TY-09	9"	\$264.41
1034-TY-10	10"	\$316.93
1034-TY-11	11"	\$325.39
1034-TY-12	12"	\$391.81
1034-TY-14	14"	\$493.52
1034-TY-16	16"	\$602.17
1034-TY-18	18"	\$1,022.31
1034-TY-20	20"	\$1,294.01
1034-TY-24	24"	\$1,542.10



**Rainskirt**  
(Belled)

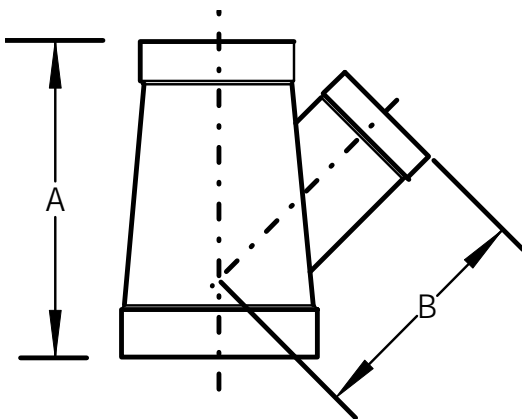
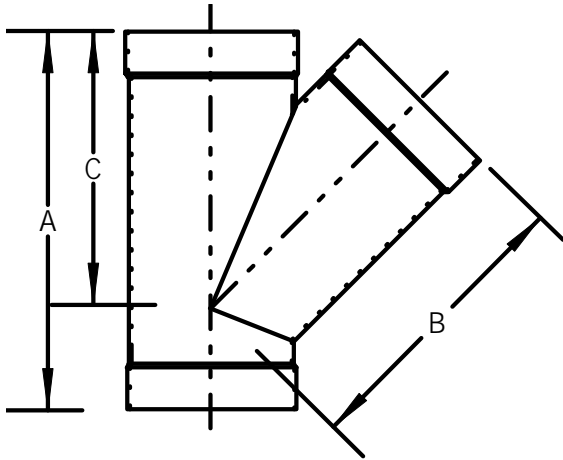
Part No.	Size	Price
1034-RS-02	2"	\$127.86
1034-RS-03	3"	\$141.23
1034-RS-04	4"	\$161.44
1034-RS-05	5"	\$174.91
1034-RS-06	6"	\$188.41
1034-RS-08	8"	\$195.10
1034-RS-10	10"	\$201.79
1034-RS-12	12"	\$235.43
1034-RS-14	14"	\$275.83
1034-RS-16	16"	\$363.30
1034-RS-18	18"	\$403.70
1034-RS-20	20"	\$417.07
1034-RS-24	24"	\$484.40



**HARRISON**

**List Price Effective 10-01-08**

**45° Wye**  
**Belled**

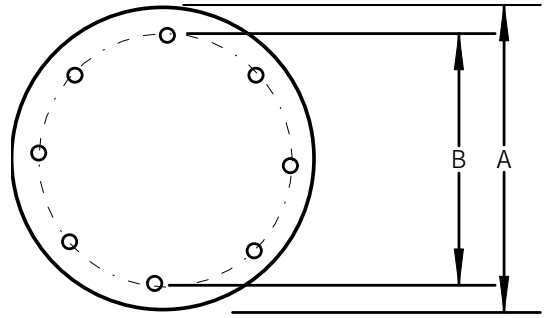
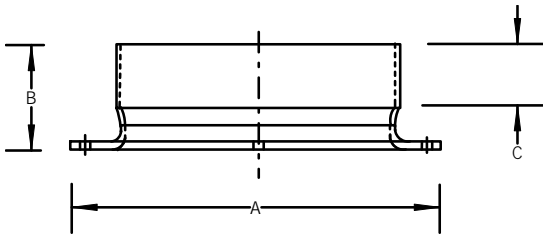


Part No.	Size	Price
1034-Y-03	3 X 3 X 3"	\$120.10
1034-Y-04	4 X 4 X 4"	\$144.12
1034-Y-0403	4 X 4 X 3"	\$129.50
1034-Y-040302	4 X 3 X 2"	\$149.53
1034-Y-050403	5 X 4 X 3"	\$176.40
1034-Y-06	6 X 6 X 6"	\$221.61
1034-Y-0604	6 X 6 X 4"	\$217.50
1034-Y-060404	6 X 4 X 4"	\$188.11
1034-Y-07	7 X 7 X 7"	\$261.28
1034-Y-070605	7 X 6 X 5"	\$201.76
1034-Y-08	8 X 8 X 8"	\$264.70
1034-Y-0804	8 X 8 X 4"	\$235.29
1034-Y-0806	8 X 8 X 6"	\$243.49
1034-Y-080604	8 X 6 X 4"	\$215.59
1034-Y-09	9 X 9 X 9"	\$306.42
1034-Y-090706	9 X 7 X 6"	\$228.63
1034-Y-10	10 X 10 X 10"	\$332.41
1034-Y-1006	10 X 10 X 6"	\$287.27
1034-Y-1008	10 X 10 X 8"	\$314.62
1034-Y-100806	10 X 8 X 6"	\$245.01
1034-Y-11	11 X 11 X 11"	\$425.16
1034-Y-110908	11 x 9 X 8"	\$267.06
1034-Y-12	12 X 12 X 12"	\$440.48
1034-Y-1208	12 X 12 X 8"	\$346.78
1034-Y-1210	12 X 12 X 10"	\$391.23
1034-Y-121008	12 X 10 X 8"	\$286.30
1034-Y-14	14 X 14 X 14"	\$510.24
1034-Y-1410	14 X 14 X 10"	\$450.06
1034-Y-1412	14 X 14 X 12"	\$497.39
1034-Y-141210	14 X 12 X 10"	\$328.91
1034-Y-16	16 X 16 X 16"	\$604.63
1034-Y-1612	16 X 16 X 12"	\$531.03
1034-Y-1614	16 X 16 X 14"	\$600.80
1034-Y-161412	16 X 14 X 12"	\$376.64
1034-Y-18	18 X 18 X 18"	\$845.39
1034-Y-1814	18 X 18 X 14"	\$681.23
1034-Y-1816	18 X 18 X 16"	\$787.93
1034-Y-181614	18 X 16 X 14"	\$555.90
1034-Y-20	20 X 20 X 20"	\$1,009.54
1034-Y-2016	20 X 20 X 16"	\$823.50
1034-Y-2018	20 X 20 X 18"	\$963.03
1034-Y-201816	20 X 18 X 16"	\$711.27
1034-Y-24	24 X 24 X 24"	\$1,378.89
1034-Y-2418	24 X 24 X 18"	\$1,064.26
1034-Y-2420	24 X 24 X 20"	\$1,274.92
1034-Y-242018	24 X 20 X 18"	\$984.47



**HARRISON**

**List Price Effective 10-01-08**



**Flange**  
(Socket/Belled)

**Blind Flange**

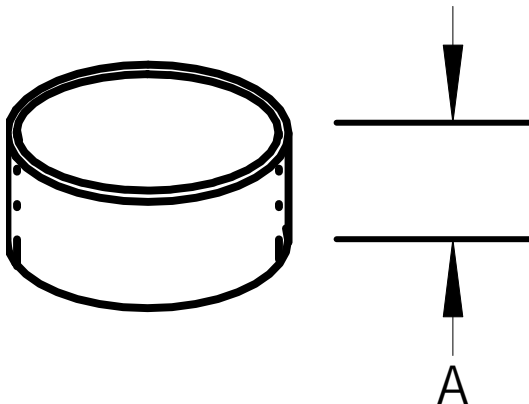
Part No.	Size	Price
1034-SF-02	2"	\$33.24
1034-SF-03	3"	\$38.03
1034-SF-04	4"	\$54.58
1034-SF-05	5"	\$57.87
1034-SF-06	6"	\$60.93
1034-SF-07	7"	\$71.82
1034-SF-08	8"	\$77.98
1034-SF-09	9"	\$96.06
1034-SF-10	10"	\$80.79
1034-SF-11	11"	\$98.63
1034-SF-12	12"	\$92.74
1034-SF-14	14"	\$109.43
1034-SF-16	16"	\$136.11
1034-SF-18	18"	\$208.20
1034-SF-20	20"	\$241.44
1034-SF-24	24"	\$265.11

*Duct drilling, not 150 #*

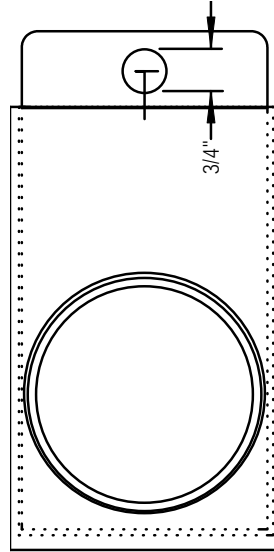
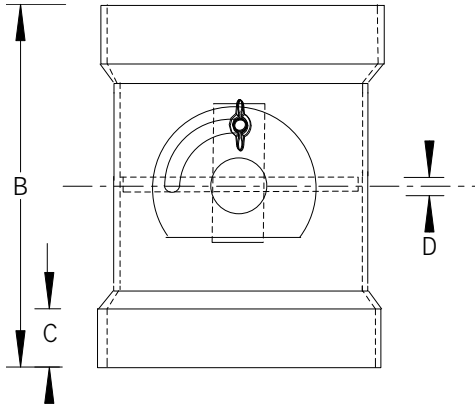
Part No.	Size	Price
1034-BF-03	3"	\$39.03
1034-BF-04	4"	\$45.06
1034-BF-05	5"	\$47.00
1034-BF-06	6"	\$48.79
1034-BF-07	7"	\$51.04
1034-BF-08	8"	\$52.56
1034-BF-09	9"	\$54.04
1034-BF-10	10"	\$56.30
1034-BF-11	11"	\$66.06
1034-BF-12	12"	\$75.06
1034-BF-14	14"	\$90.07
1034-BF-16	16"	\$97.58
1034-BF-18	18"	\$108.82
1034-BF-20	20"	\$131.36
1034-BF-24	24"	\$157.62

*All flanges are 3/16" thick material*  
*All bolt holes are 5/16" diameter*

**Cap**  
(Belled)



Part No.	Size	Price
1034-CA-03	3"	\$30.03
1034-CA-04	4"	\$53.90
1034-CA-06	6"	\$69.77
1034-CA-08	8"	\$65.93
1034-CA-10	10"	\$73.19
1034-CA-11	11"	\$98.49
1034-CA-12	12"	\$77.29
1034-CA-14	14"	\$112.44
1034-CA-16	16"	\$135.42
1034-CA-18	18"	\$154.30
1034-CA-20	20"	\$213.68
1034-CA-24	24"	\$231.18

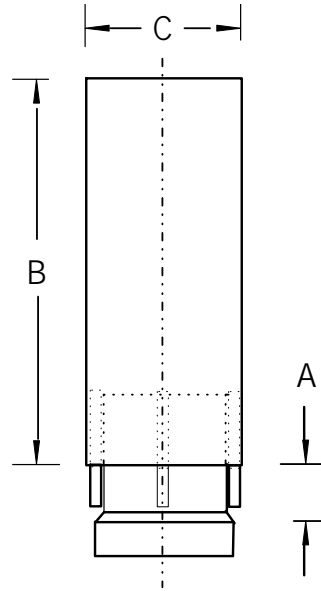
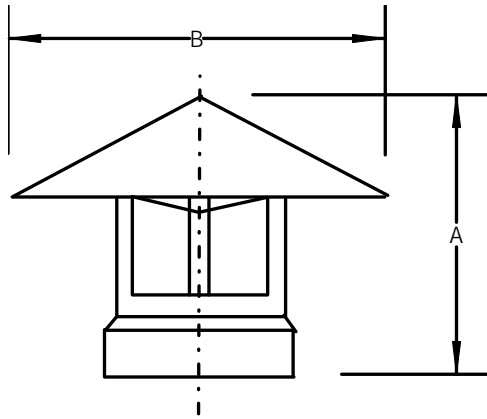


**Butterfly Damper**  
(Belled)

**Blastgate**  
(Belled)

Part No.	Size	Price
1034-BD-02	2"	\$131.87
1034-BD-03	3"	\$136.24
1034-BD-04	4"	\$160.04
1034-BD-05	5"	\$182.62
1034-BD-06	6"	\$203.82
1034-BD-07	7"	\$208.20
1034-BD-08	8"	\$213.83
1034-BD-09	9"	\$240.76
1034-BD-10	10"	\$235.97
1034-BD-11	11"	\$261.28
1034-BD-12	12"	\$262.64
1034-BD-14	14"	\$339.24
1034-BD-16	16"	\$372.08
1034-BD-18	18"	\$503.40
1034-BD-20	20"	\$599.16
1034-BD-24	24"	\$787.93

Part No.	Size	Price
1034-BG-02	2"	\$137.48
1034-BG-03	3"	\$177.83
1034-BG-04	4"	\$166.89
1034-BG-05	5"	\$181.26
1034-BG-06	6"	\$199.99
1034-BG-07	7"	\$231.87
1034-BG-08	8"	\$235.97
1034-BG-09	9"	\$249.38
1034-BG-10	10"	\$252.39
1034-BG-11	11"	\$317.37
1034-BG-12	12"	\$320.10
1034-BG-14	14"	\$413.12
1034-BG-16	16"	\$435.01
1034-BG-18	18"	\$536.23
1034-BG-20	20"	\$735.96
1034-BG-24	24"	\$834.44



**Rain Cap (Style "A")**  
(Belled)

Part No.	Size	Price
1034-WCA-02	2"	\$235.29
1034-WCA-03	3"	\$194.06
1034-WCA-04	4"	\$211.64
1034-WCA-05	5"	\$250.26
1034-WCA-06	6"	\$262.83
1034-WCA-07	7"	\$275.26
1034-WCA-08	8"	\$289.13
1034-WCA-09	9"	\$300.29
1034-WCA-10	10"	\$360.27
1034-WCA-11	11"	\$369.12
1034-WCA-12	12"	\$400.29
1034-WCA-14	14"	\$544.22
1034-WCA-16	16"	\$596.42
1034-WCA-18	18"	\$859.07
1034-WCA-20	20"	\$941.14
1034-WCA-24	24"	\$1,118.98

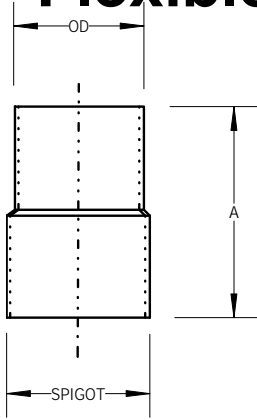
**Rain Cap (Style "B")**  
**Zero Pressure Loss Feature**  
(Belled)

Part No.	Size	Price
1034-WCB-03	3"	\$202.68
1034-WCB-04	4"	\$238.68
1034-WCB-05	5"	\$261.22
1034-WCB-06	6"	\$279.26
1034-WCB-07	7"	\$292.74
1034-WCB-08	8"	\$310.50
1034-WCB-09	9"	\$360.12
1034-WCB-10	10"	\$390.36
1034-WCB-11	11"	\$421.36
1034-WCB-12	12"	\$437.93
1034-WCB-14	14"	\$588.19
1034-WCB-16	16"	\$775.54
1034-WCB-18	18"	\$943.88
1034-WCB-20	20"	\$1,006.80
1034-WCB-24	24"	\$1,272.19

Please call for pricing on transitions



## Flexible Duct & Flex Adapters

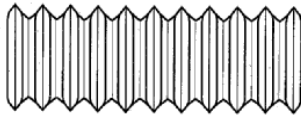


**Flex Hose Adapter**  
Hose Spigot x Duct Spigot

Part No.      Size      Spigot      Price

O.D.	P.E.
(Hose)	(Duct)

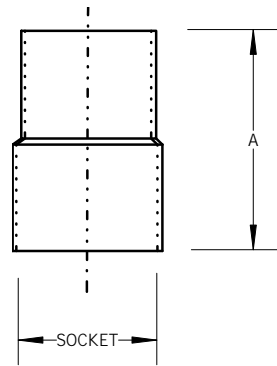
1033-FHA-02	2"	2.375"	\$21.77
1033-FHA-03	3"	3.500"	\$27.79
1033-FHA-04	4"	4.500"	\$28.54
1033-FHA-05	5"	5.563"	\$46.39
1033-FHA-06	6"	6.625"	\$50.47
1033-FHA-07	7"	7.375"	\$54.05
1033-FHA-08	8"	8.625"	\$58.54
1033-FHA-10	10"	10.750"	\$74.32
1033-FHA-12	12"	12.750"	\$93.08
1033-FHA-14	14"	14.000"	\$38.42
1033-FHA-16	16"	16.000"	\$44.74



**Flexible PVC Duct**

Part No.      Size      Price

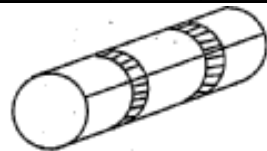
1033-FH-02	2"	\$6.36
1033-FH-03	3"	\$10.04
1033-FH-04	4"	\$11.78
1033-FH-05	5"	\$12.73
1033-FH-06	6"	\$13.49
1033-FH-08	8"	\$18.91
1033-FH-10	10"	\$24.02
1033-FH-12	12"	\$29.11
1033-FH-14	14"	\$33.88
1033-FH-16	16"	\$41.01



**Flex Hose Adapter**  
Hose Spigot x Duct Bell

Part No.      Size      Price

1034-FHA-02	2"	\$29.58
1034-FHA-03	3"	\$36.78
1034-FHA-04	4"	\$37.39
1034-FHA-05	5"	\$53.13
1034-FHA-06	6"	\$56.30
1034-FHA-08	8"	\$68.00
1034-FHA-10	10"	\$82.57
1034-FHA-12	12"	\$108.10
1034-FHA-14	14"	\$38.42
1034-FHA-16	16"	\$44.74



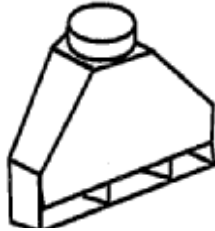
**Flexible Duct Coupling**

Part No.      Size      Price

1034-FC-03	3"	\$71.30
1034-FC-04	4"	\$77.02
1034-FC-06	6"	\$79.88
1034-FC-07	7"	\$85.19
1034-FC-08	8"	\$89.84
1034-FC-09	9"	\$94.49
1034-FC-10	10"	\$99.83
1034-FC-12	12"	\$112.33
1034-FC-14	14"	\$124.79
1034-FC-16	16"	\$134.78
1034-FC-18	18"	\$170.30
1034-FC-20	20"	\$206.66
1034-FC-24	24"	\$255.72



*Please contact the factory for prices on:*  
Double Slot, Single Lateral, Double Lateral, and other custom hoods.



**Rear Exhaust Hood**  
Single Slot

Part No.	Size	Price
1034-SSH-18	18"	\$596.06
1034-SSH-24	24"	\$645.82
1034-SSH-30	30"	\$745.17
1034-SSH-36	36"	\$794.74
1034-SSH-42	42"	\$895.21
1004-SSH-48	48"	\$968.62
1034-SSH-54	54"	\$1,023.31
1034-SSH-60	60"	\$1,067.97
1034-SSH-66	66"	\$1,142.53
1034-SSH-72	72"	\$1,266.66
1034-SSH-84	84"	\$1,440.53
1034-SSH-96	96"	\$1,628.11